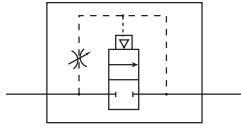


Slow Start Valve S18 / S28

= "Most Popular"



S18-02-A000

Specifications

Flow Capacity*	S18	1/4	95 SCFM (44.8 dm ³ /s)
		3/8	101 SCFM (47.6 dm ³ /s)
		1/2	113 SCFM (53.3 dm ³ /s)
	S28	3/8	196 SCFM (92.5 dm ³ /s)
		1/2	210 SCFM (99.0 dm ³ /s)
		3/4	230 SCFM (108.5 dm ³ /s)
Maximum Flow Rate Across Needle Valve			12 SCFM (5.7 dm ³ /s)
Operating Temperature			32° to 150°F (0° to 65.5°C)
Maximum Supply Pressure			150 PSIG (10.3 bar)
Minimum Operating Pressure			30 PSIG (2.1 bar)
Port Size	NPT / BSPP-G	S18	1/4, 3/8, 1/2
		S28	3/8, 1/2, 3/4
Weight	lb. (kg)	S18	.93 (.42)
		S28	1.16 (.53)

* Inlet pressure 150 PSIG (10.3 bar). Pressure drop 5 PSID (0.3 bar).

Features

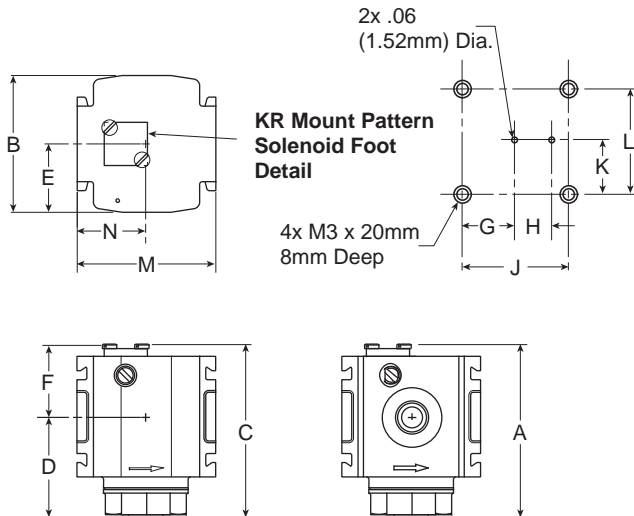
- Can Reduce the Possibility of Equipment or Part Damage and Occupational Hazard to the Worker
- Volume Dependent Devices
- Air-Piloted
- Modern Design and Appearance

Materials of Construction

Body	Aluminum
Bottom Plug	33% Glass-Filled Nylon
Valve Assembly	Brass / Nitrile
Springs	Music Wire
Seals	Nitrile


Replacement Kit

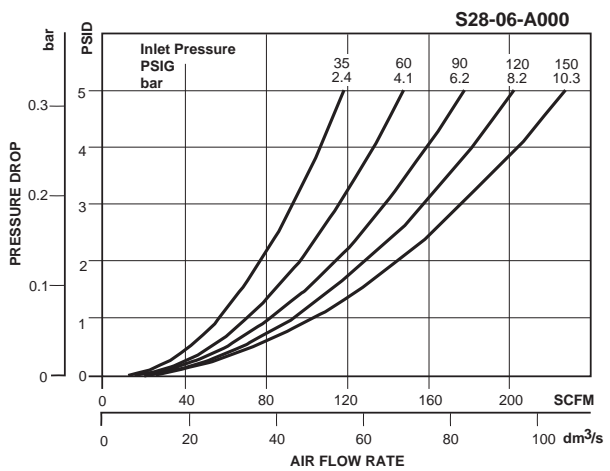
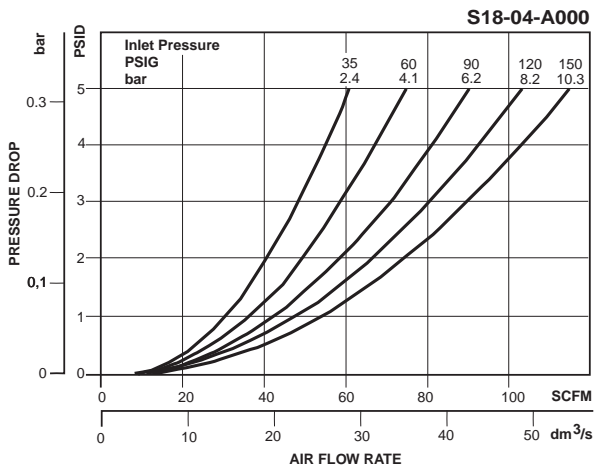
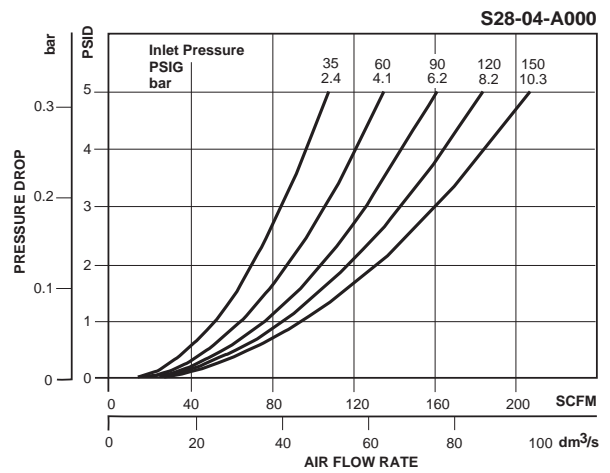
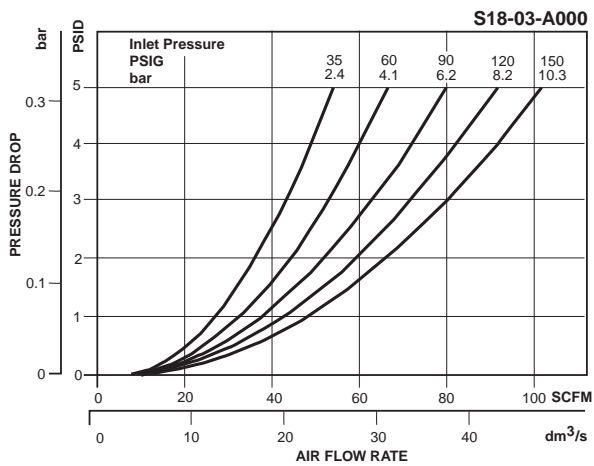
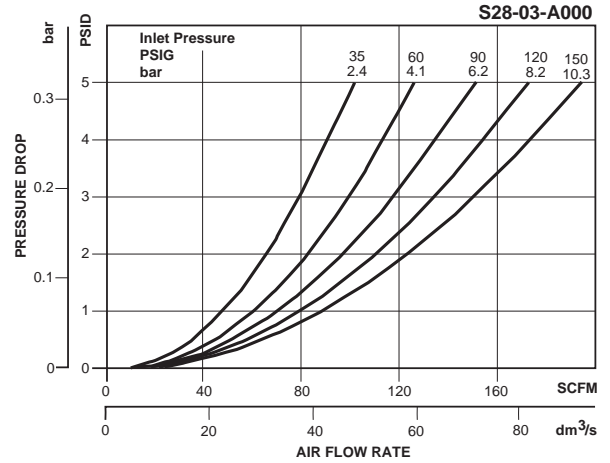
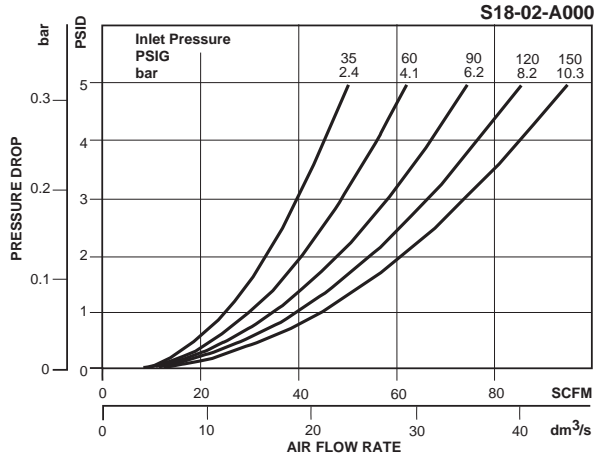
Valve Assembly KitVRP-96-927



Dimensions

Models	Inches (mm)	A	B	C	D	E	F	G	H	J	K	L	M	N
Standard Unit S18-XX-A000		2.94 (75)	2.36 (60)	2.94 (75)	1.71 (43.5)	1.18 (30)	1.23 (31)	0.28 (7.0)	0.18 (4.6)	0.55 (14)	0.28 (7.0)	0.55 (14)	2.36 (60)	1.18 (30)
Standard Unit S28-XX-A000		3.03 (77)	2.88 (73)	3.03 (77)	1.79 (45.5)	1.44 (36.5)	1.24 (31)	0.28 (7.0)	0.18 (4.6)	0.55 (14)	0.28 (7.0)	0.55 (14)	2.88 (73)	1.44 (36.5)

 = "Most Popular"



Ordering Information

Model Type	Port Size	Internal Air Pilot Minimum Flow 12 SCFM (5,6 dm ³ /s)
S18	1/4	S18-02-A000
	3/8	S18-03-A000
	1/2	S18-04-A000
S28	3/8	S28-03-A000
	1/2	S28-04-A000
	3/4	S28-06-A000

Options - To order an option supplied with the unit model, add the appropriate coded suffix letter in the designated position of the model number.